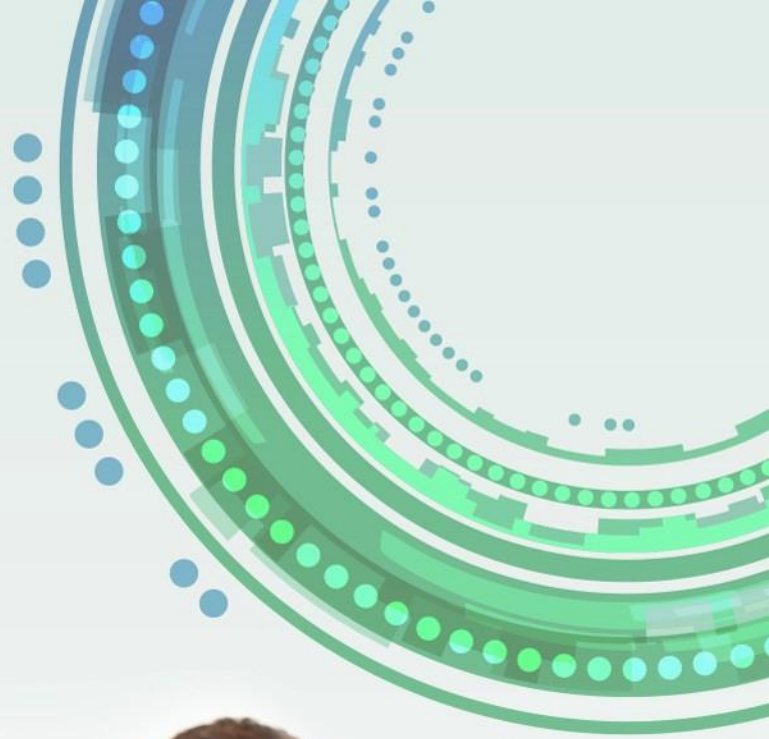




# CMS Readmission and Mortality Scorecards



# Objectives

- Define why we made the scorecards
- Understand what the scorecards do
- Learn to use the scorecards



# Agenda

- Documentation
- Readmission Scorecard
- Mortality Scorecard
- PEAK Demo



# Where did it come from?

- CMS Specifications
  - ICD-9
  - Proposed ICD-10
- Built in profiles allow users to mimic the CMS readmission and mortality measures
- Monitor readmission and mortality rate constantly



# Getting There

## My Scorecards

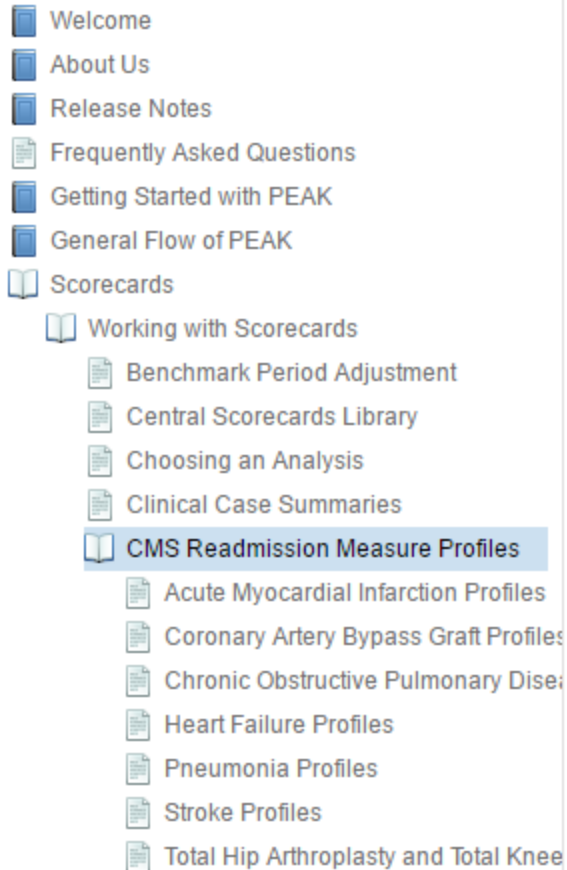
### Scorecard Templates

Template Name	Template Description
 CMS Mortality Scorecard - ICD-9 and ICD-10	CMS Mortality Scorecard
 CMS Readmission Reduction Profiles - ICD 9 and ICD 10	CMS Readmission Reduction Profiles
 CMS Readmission Reduction Profiles - ICD-10	CMS Readmission Reduction Profiles
 CMS Readmission Reduction Profiles - ICD-9	CMS Readmission Reduction Profiles

- From Home screen
  - Scorecards
  - My Scorecards
    - Scorecard Templates
- Versions
  - ICD-9
  - ICD-10
  - Both



# Documentation



- Documentation
  - Scorecards
    - Working with Scorecards
      - CMS Readmission Measure Profiles
- Shows CMS Criteria compared to TBS Interpretation



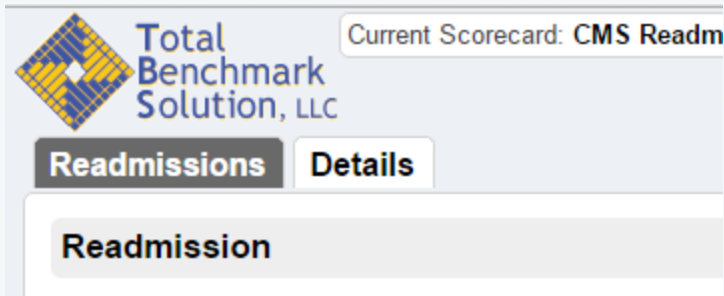
# Readmission Scorecard



CONFIDENTIAL-© Syntellis Performance Solutions, LLC,  
2021. All rights reserved.

# Exploring the Scorecard

- Tabs
  - Readmissions
    - 30 Day Readmission Rate Forward
  - Details





# Profiles

- Acute Myocardial Infarction
- Coronary Artery Bypass Graft
- Heart Failure
- Stroke
- Total Hip Arthroplasty/Total Knee Arthroplasty
- Chronic Obstructive Pulmonary Disease
- Pneumonia



CONFIDENTIAL-© Syntellis Performance Solutions, LLC,  
2021. All rights reserved.

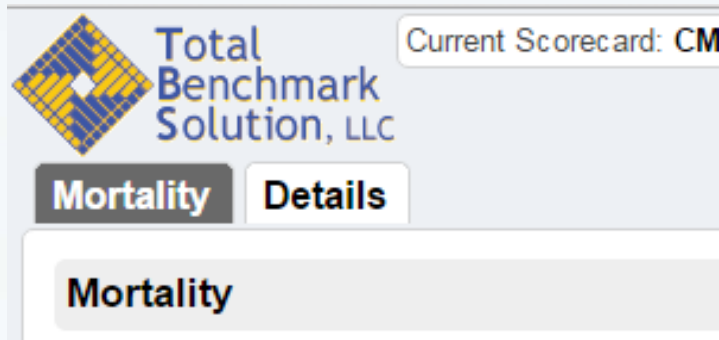
<input type="checkbox"/>	Name	Type
<input type="checkbox"/>	AMI Readmissions ICD 9 and 10	Internal - Encounter
<input type="checkbox"/>	CABG Readmissions - ICD-9 (Requires Unlock)	Internal - Encounter
<input type="checkbox"/>	COPD Readmissions - Profile 1 - ICD 9 and 10	Internal - Encounter
<input type="checkbox"/>	COPD Readmissions - Profile 2 - ICD 9 (Requires Unlock)	Internal - Encounter
<input type="checkbox"/>	HF Readmissions ICD 9 and 10	Internal - Encounter
<input type="checkbox"/>	Hospital	Internal - Encounter
<input type="checkbox"/>	Nationwide Medicare	Peer Group
<input type="checkbox"/>	PN Readmissions ICD 9 - Profile 2 (Requires Unlock)	Internal - Encounter
<input type="checkbox"/>	PN Readmissions ICD 9 and 10 - Profile 1	Internal - Encounter
<input type="checkbox"/>	Stroke Readmissions ICD 9 and 10	Internal - Encounter
<input type="checkbox"/>	THA/TKA Readmissions ICD9 and ICD10 (Requires Unlock)	Internal - Encounter

# Mortality Scorecard



# Tabs

- Mortality
  - Mortality Rate
- Details



## Profiles

	Name	Type
<input type="checkbox"/>	AMI	Internal - Encounter
<input type="checkbox"/>	COPD	Internal - Encounter
<input type="checkbox"/>	HF	Internal - Encounter
<input type="checkbox"/>	Hospital	Internal - Encounter
<input type="checkbox"/>	Nationwide Medicare	Peer Group
<input type="checkbox"/>	PN Profile 1	Internal - Encounter
<input type="checkbox"/>	PN Profile 2	Internal - Encounter
<input type="checkbox"/>	STK	Internal - Encounter

# Profiles

- Acute Myocardial Infarction
- Chronic Obstructive Pulmonary Disorder
- Heart Failure
- Stroke
- Pneumonia



**IMARK**  
**UTION**  
*Success*

# Questions?



CONFIDENTIAL-© Syntellis Performance Solutions, LLC,  
2021. All rights reserved.

# Upcoming Webinars

Webinar Name	Date
Care Variation Section	July 18 1:00 – 2:00 July 29 10:00 – 11:00
PPC and PPR Sections	July 20 10:00 - 11:00 July 29 12:00 – 1:00
PEAK 6.1 Release Training	July 22 10:00 – 11:00 July 26 2:00 – 3:00





**Erin Coppersmith**  
**970-204-7871 ext. 818**

**Erin.coppersmith@totalbenchmarksolution.com**

